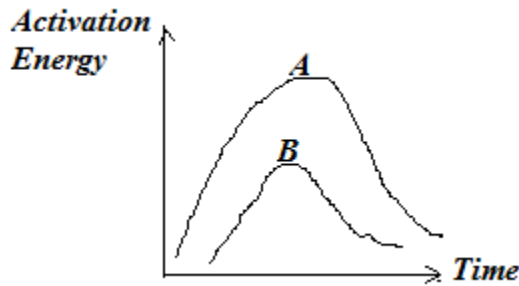


**Biology Evaluation Model Answer 1<sup>st</sup> Secondary Biology**

Q1

<u>Simple Squamous</u> One layer of flattened epithelial tissue Exist in Alveoli and blood capillaries.	<u>Simple columnar</u> One layer of columnar epithelial tissue Exist in Stomach and Small intestine.
---	--

Q2



-If the activation Energy decreases so the time needed for the chemical reaction will decrease.

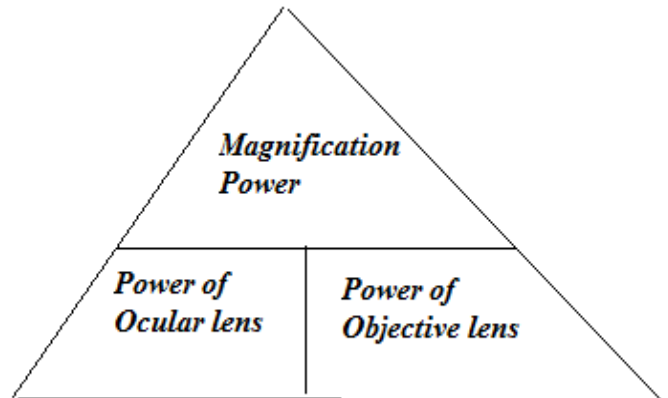
3-The temperature of detergents is from 37<sup>o</sup>C: 40<sup>o</sup>C

Bec. most enzymes work from 37<sup>o</sup>C: 40<sup>o</sup>C

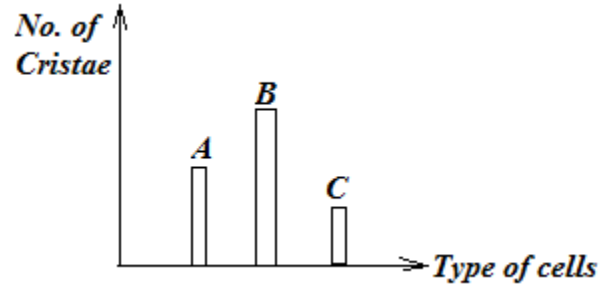
4- Magnification power of microscope = 500 Times

Power of Ocular lens = 50 Times.

Power of Ocular lens =  $500 / 50 = 10$  Times.



5- Type of the cell in B is muscular cells  
 Bec. the no. of cristae will increase to produce more energy.



6-

Name of Tissue	Animal or plant	Simple or Complex
Vascular connective	Animal tissues	Complex

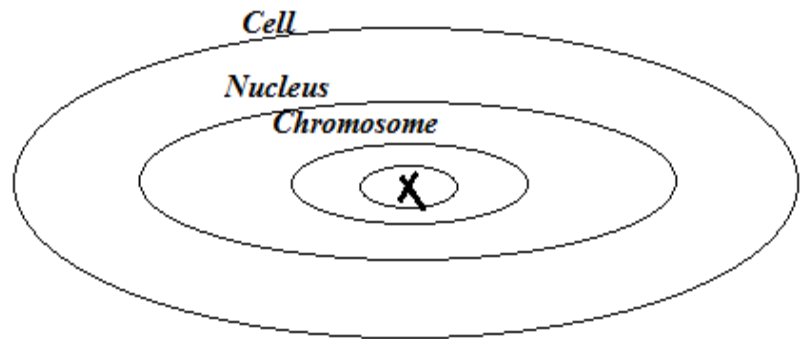
7- The structure of X is

Pentose sugar (Ribose)

Sugar + Phosphate group +

Nitrogenous base (Thymine)

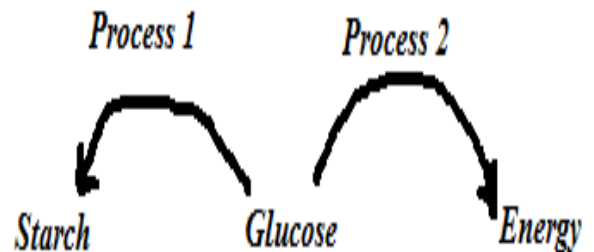
Bec. we talk about chromosome (DNA)



8- When using the microscope, to increase the differentiation between parts of sample ...done  
 Using Dyes specific parts in the sample.

9- Process (2) is catabolism (**Breaking down of molecules to produce energy**)

while process (1) Anabolism. (**Building of polymer from monomer**)



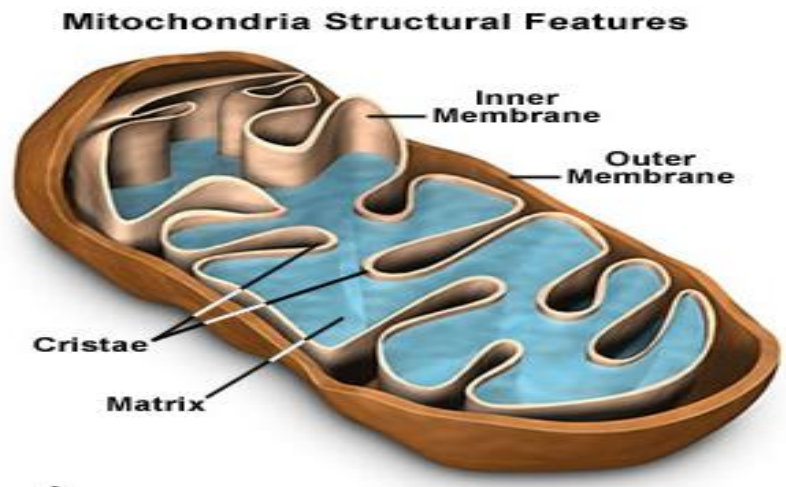
10-ATP molecule is formed due to combination of

ADP + P in the presence of energy so the sequence of using stored energy in it is:

Glycogen – Glucose – ATP – Energy.

11-The given figure represents one of the cell organelles these organelles are abundant in the cells of Liver and muscles

(To produce energy)



12-Study the given figure:

Which the following statements is true according to the Enzymes illustrated in the figure?

Enzyme No. (2) is less specialized than Enzyme No. (3)

Bec. it has less active site than Enzyme (3)

